

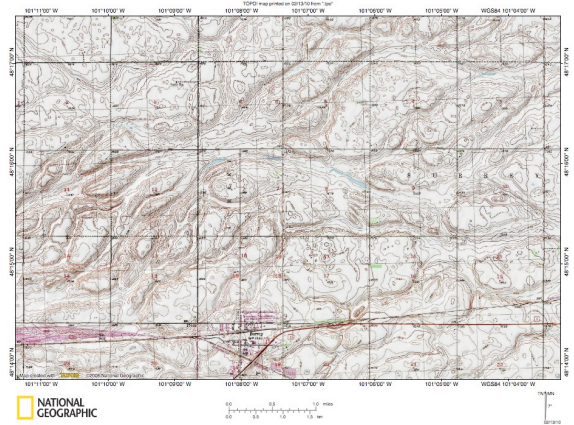
Name: _____

Analyzing and Interpreting Earth's Features on a Map

1. Match the map with the type of map it is. (1 point each)

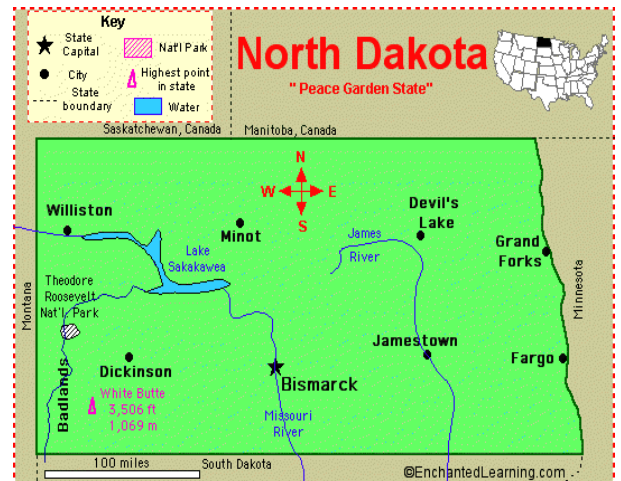
_____ Location Map

A



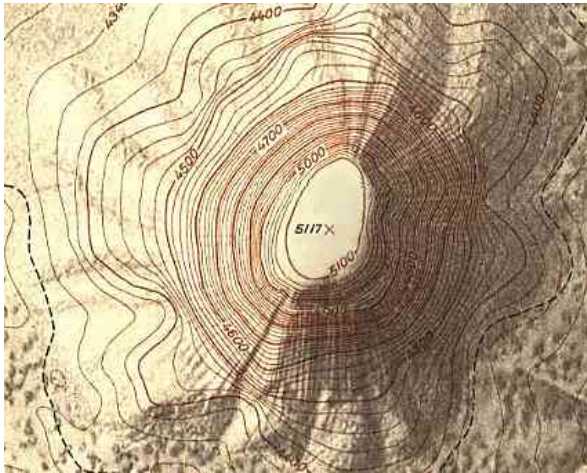
_____ Topographic Map

B



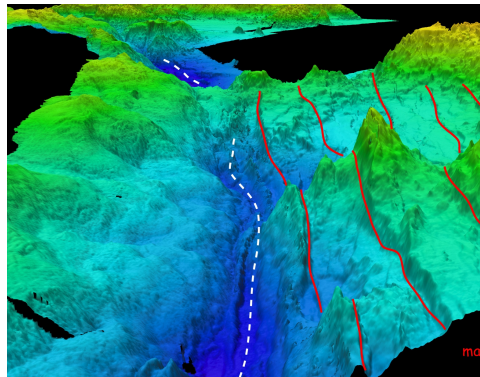
2. Which of the following is this map showing?(1 point)

1. Mountain
2. Ocean trench
3. Ocean floor structure
4. A building



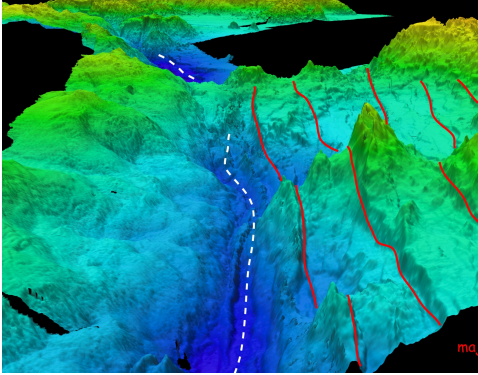
3. What is the dotted white line showing on the topographic map?(1point)

1. A railroad
2. Ocean floor structure
3. Mountain
4. Ocean floor trench



4. What are the red lines showing on the topographic map?(1 point)

1. Ocean structures
2. Walking paths
3. Ocean trenches
4. Danger



True or False (1 point each)

Please circle either true or false for each statement.

5. True/False

A topographic map would be used to find the post office.

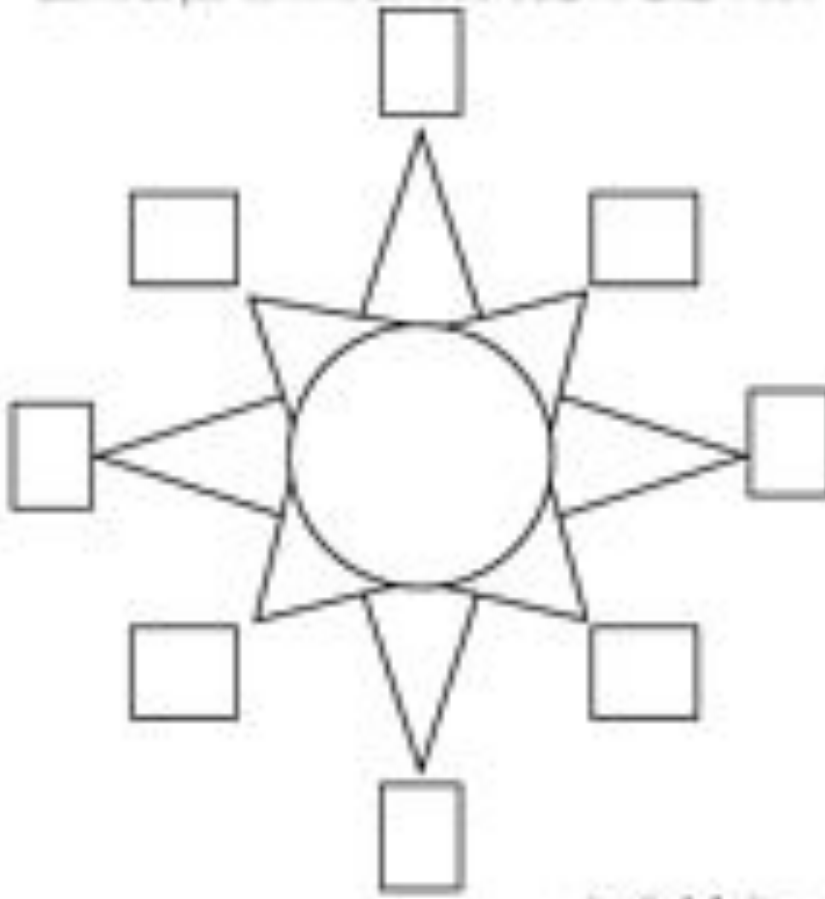
6. True/False

You would find the elevation of a mountain range on a topographic map.

7. True /False

If I am visiting a new town and want to find my hotel I should use a location map.

8. Label the compass rose.(4 point)



9. In your own words, describe what you can use a topographic map for.

10. In your own words, describe what you use a location map for.

11. Explain how a map is helpful to you.

12. Give **TWO** examples of a topographic map.(1 point)

1. _____

2. _____

13. Give **TWO** examples of a location map.(1 point)

1. _____

2. _____

14. Label the map.

Reading a Map

Davis Street

KEY	
	School
	Restaurant
	Supermarket
	House
	Park
	Road
	Railroad

Underline the map title.

Write **N**, **S**, **W**, and **E** on the compass rose.

Label the road **Davis Street**.

Trace the railroad with **purple**.

Color the park **green**.

Color the school **red**.

Color the supermarket **brown**.

Color the restaurant **yellow**.

Color the houses south of the road **blue**.

Color the house east of the railroad **orange**.

Grade: 4	
Unit Topic:	Analyzing and Interpreting Earth's Features on a Map
Approximate Time Required:	3 weeks
Main Purpose of the Unit Study:	The purpose of this unit is to ensure students are able to analyze and interpret data from maps to describe patterns of the earth's surface. Students will develop skills in maps that include topographic maps of the Earth's land and ocean floor. Students will also show skill in maps of location showing mountains, ocean floors structures, and deep ocean trenches. Students will also show an understanding of how to use a map to locate places and features on a map.
Lesson Outline:	<ol style="list-style-type: none">1. Introduce maps<ol style="list-style-type: none">a. Look at different types of maps and make observations.b. Differentiate between topographic and location maps.2. Look at more location maps<ol style="list-style-type: none">a. Review how to use oneb. Create location map based on school3. Look at topographic maps<ol style="list-style-type: none">a. Learn how to analyze and use them by looking at different features within a topographic map4. Look at mountain ranges, ocean floor structures, and deep ocean trenches on a topographic map

	<ul style="list-style-type: none"> a. Learn to identify them on a topographic map b. Labeling worksheet on identifying mountain ranges, ocean floor structures, and deep ocean trenches on a topographic map <p>5. Review the differences between topographic and location maps.</p> <ul style="list-style-type: none"> a. Group work comparing and contrasting the two types of maps. b. Virtual field trip with google maps to look at map features. <p>6. Create topographic map with salt dough</p> <ul style="list-style-type: none"> a. Must include a zoomed in view of map that shows a location map view (drawing)
<p>Procedures and Activities:</p>	<ul style="list-style-type: none"> 1. Prepare examples for location and topographic map projects 2. Small collaborative group work and large group work and discussion 3. Map examples for viewing different types of maps 4. Google maps view of different locations 5. Compare and contrast activity
<p>Instructional Aids or Resources:</p>	<ul style="list-style-type: none"> 1. Locate different features to look at on google maps and on the paper map examples 2. Use free and accessible online material

Evaluation:

1. Activities and small group performance
 - a. Compare and contrast
 - b. Labeling worksheet
2. Project-based activity
 - a. Students creating their own map examples
3. Unit test